



LONDON BAY HOMES / COURTESY PHOTOS



Just one look was all it took for Cathy and John McCaul to officially make Naples their home. The brand new London Bay Homes property was only available for 11 days before the couple walked in and canceled their plans to build nearby. "It ticked every box for us," says Cathy. With exterior spaces like this, it's easy to see why.

# OUTSIDE

Naples newbies find just what they want on a 'recon' mission

# IN

BY MICHAEL KORB  
Luxe Living Editor

Despite my fairly acceptable level of education, I still couldn't tell you how magnets work. But every year it gets easier to describe what attracts newcomers to our area to take up residence. Aside from the gorgeous weather and beautiful beaches, it's because of houses such as 541 Neapolitan Lane in Park Shore.

This three-bedroom, three-bath stunner is just blocks from shopping and dining at the Village on Venetian Bay and the beaches of the Gulf of Mexico. Its modern Florida casual aesthetic makes the 3,584-square-foot

SEE OUTSIDE, PAGE 12 ►

# OUTSIDE

From page 10

home immediately welcoming. At least that's what attracted Cathy and John McCaul to purchase the property recently from London Bay Homes.

Originally from Omagh, in County Tyrone in Northern Ireland, the couple decided on Naples last fall once they fully committed to leave the snow and unsavory winter weather of Westport, Conn.

"We spent most of our formative years around the U.K. and the London area before I came to Connecticut via my role with MasterCard (she's president of MasterCard Processing) in 2008 and had a great time living there until I took another assignment over to London two years ago," says Cathy. (John is retired, but worked for a venture capital firm.) "So last summer we sold off the house in Westport and decided we were going to buy a home in Florida. And immediately John went off searching and told me the place we needed to be was Naples. It is just a lovely part of the world."

They spent the holidays in the area searching for the perfect place. "He looked at copious numbers, I looked at the short list," says Cathy. "And in May we found this place."

Oddly enough, by that time they had decided it would be easier to just build, and they met with London Bay Homes because they liked their quality and the fact that the builder could do a turnkey solution for them. They visited this particular home merely as a reconnaissance mission to check out finishes, build quality, etc.

"But the minute we walked through the front door we said, 'This is it,'" says Cathy. "I have to admit I was not looking forward to building something else — we're building another home in Ireland right now, and that's hard enough. I didn't really want two projects on my hands. But this place ticked every box for us."

Their home in Westport, a very large, eight-bedroom home, worked perfectly because they both come from very large families. In Naples, they wanted to get the same sense of space but without the enormity. (Sorry, family.)

"And the minute you walk into this place you got the impression it was a cozy home but it had such bright light about it," says Cathy. "The design was all about that outside-in living that Florida is so famous for but that we hadn't really managed to see in any of the other homes we looked at."

"It seemed (elsewhere) like there was more of an emphasis on a very big house on a very small plot, with no real outside space or sense of the sun moving across the home and giving you light at different times of day. ... Here, we've still got the huge living space but you can close the doors when you want to and you've got the sun shining on the fabulous patio and reflecting back into the house."

That's what really captured their imagination. But just as important was that the interior designers were an intimate part of the architecture and design of the home. "One of my pet peeves is seeing lamp (cords) trailing to the (outlet)," says Cathy. "Well, there's none of that. It's all hidden. And they didn't pinch on the quality of the artwork on the walls or the furnishings, so when we walked in we knew that it was furnished to the standards that we would furnish our own home. (The furnishings of the Westport home are headed to Ireland.) Even down to the towels they had on the racks. And that immediately gives you the sense that you don't need to go looking inside all the cupboards looking for faulty craftsmanship. We didn't even think about that, whereas I remember in a lot of the other homes I was opening cupboards and opening and closing doors to get a sense of whether they put lightweight doors on."

Senior design director Jennifer Stevens and interior designer Luann Powers of



**Above:** "We're European so we still believe in sitting down for dinner with friends and family," says Cathy. And with many friends and family expected to visit, the fact that the home has four tables as dining options was a pleasant surprise.

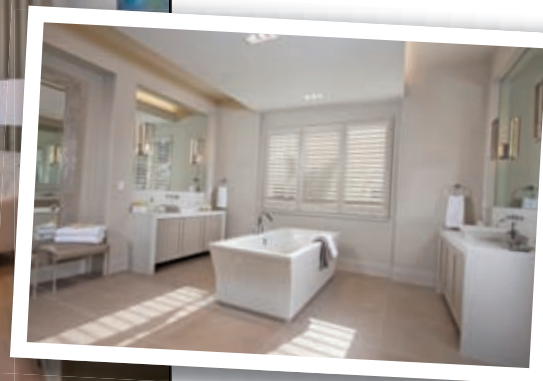
**Right:** Jennifer Stevens and Luann Powers of Romanza Interior Design handled the interior design of the 3,584-square-foot home and mastered the use of visual texture while working deftly in soothing sand tones and watery greens and blues.



**Left:** The illuminated coffered ceiling in the eat-in kitchen adds yet another textured element and helps anchor kitchen island and dining space.



**Below:** The expansive master suite opens onto the resort-like pool area and features an en suite with a free-standing Kohler Stargazer tub under a floating backlit ceiling.



Romanza Interior Design handled the home from the outset and knew they wanted to create contemporary coastal flair with clean lines without being stark. They used a lot of textures throughout — grass cloth and wood — and used backlit coffered ceilings in the kitchen, dining room and master bath to help define the spaces while also adding drama with a clean visual element. And the open floor plan, which takes full advantage of exterior spaces, makes the home a winner.

"I think the study is a good example," Ms. Stevens says. "The relation of the various interior areas of the home to the exterior is key. For the size of the lot, this

really makes a very livable space. And the outside living space feels like part of the (interior) living space.

The study features two retractable walls that allow the room to open directly onto the outdoor seating area, creating wide views of the resort-like pool area with a raised water feature that creates a buffer for neighborhood sounds. "It is great to get up in the morning and open it up," says Cathy. "I'm working hard, but it feels like I'm not."

Throughout the main gathering areas Ms. Stevens used light hardwood French oak Provence flooring, creating a rustic, sun-bleached backdrop for coastal

accents. A serene color palette of watery blues, aqua and sands keep the space warm and inviting, while contemporary light fixtures keep the ambience on point.

Frankly, it's difficult to imagine anyone not being attracted to this house.

"We definitely won't regret this decision," says Cathy. "It's so easy to live in it." Magnets? Not so easy. ■

— London Bay Homes  
(866) 920-1754; [www.LondonBay.com](http://www.LondonBay.com)

— Romanza Interior Design  
596-1613; [www.romanza.com](http://www.romanza.com)



YOU'VE BEEN  
DREAMING  
ABOUT IT FOR YEARS.  
NOW IT'S TIME.

HOW WILL YOU EXPRESS YOURSELF?

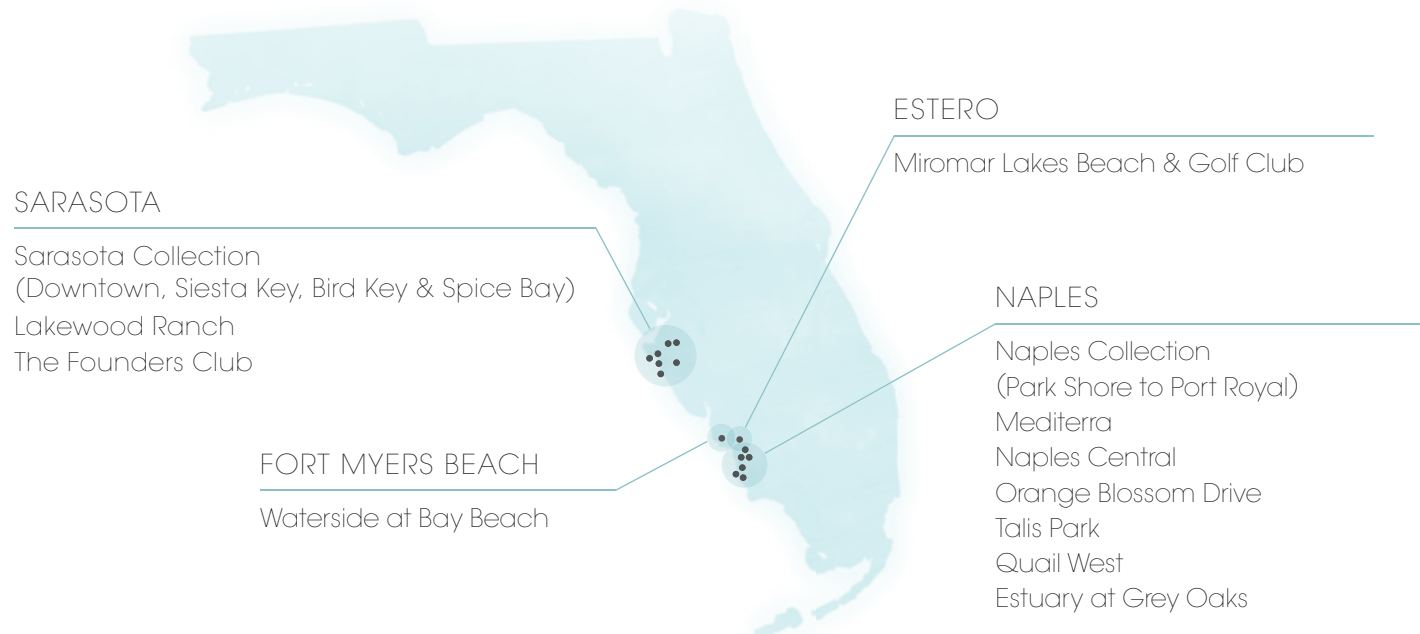
WILL IT BE BRIGHT AND VIBRANT?

BURSTING WITH LIFE?

OR WILL IT BE AN OASIS OF CALM?



YES, IT WILL BE ALL THESE THINGS. IT WILL BE WHATEVER YOU WANT IT TO BE.



Luxury Living from \$1 Million to One of a Kind ■ 866.920.1754 ■ [PrivateLabelLiving.com](http://PrivateLabelLiving.com)

